



rTM SE system showcase monitoring without electrical connections

For showcase monitoring applications Carel proposes a battery powered wireless sensor installed on the showcase to record the temperature, combined with a Carel supervisory system.

This solution is ideal for retrofit applications due to its easy installation and connection. The main advantages are:

- no electrical connections;
- fast sensor installation on the refrigeration units;
- no need to replace the existing controller because the rTM monitoring devices are completely independent;
- simplified system monitoring (including via remote connection). In the event of alarms, system operating status is notified via SMS, email, FAX;
- can process and send customised reports;

The local button on the sensor (BP) avoids signalling high temperature alarms when the showcase isn't used or is being cleaned.

The system can be used on any installations where infrastructure prevents installation of a wired network.

The Router-Bridge device can be used to connect Modbus RS485 instruments wirelessly that otherwise would not be reachable over wired lines, exploiting the same wireless connection to send data to the supervisor.

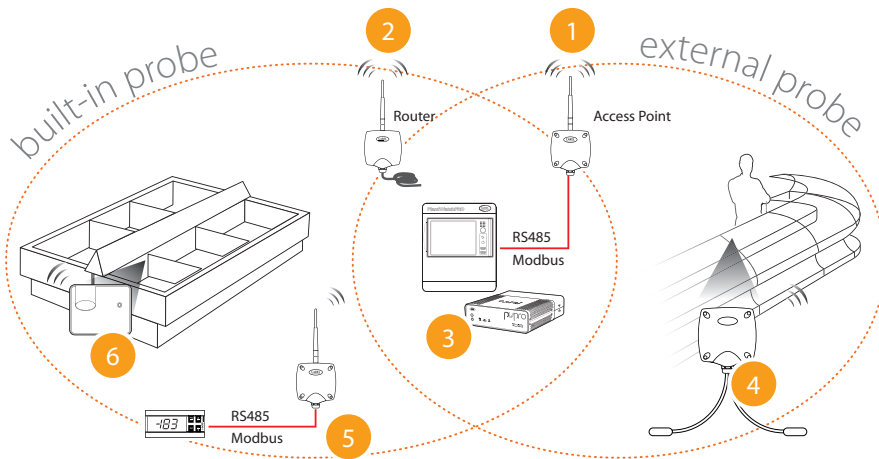
"BP" built-in probe

- bypass high temperature alarm from local button;
- automatic recognition of showcase temperature, automatic alarm parameter setting;
- compliant with standard EN 13485.

"EP" external probe

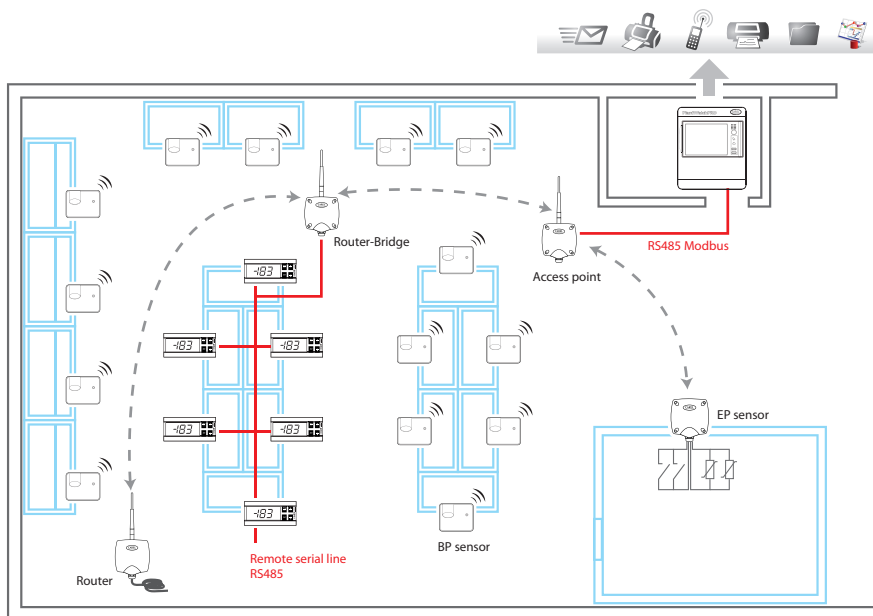
- one sensor to monitor two showcases

Solution



- 1 Receiver (Access Point) (code WS01AB2M20)
- 2 Router (code WS01RC1M20)
- 3 Supervisor (code see price list)
- 4 EP Sensor (code WS01W02M00) also in version with mains power supply and built-in Router (code WS01VB2M10)
- 5 Router-Bridge (code WS01RB2M0)
- 6 BP Sensor (code WS01U01M00)

Example layout



List of materials

WS01AB2M20	Access Point	1 pc
WS01RC1M20	230 Vac Router	1 pc
WS01RB2M20	Router-Bridge	1 pc
WS01U01M00	BP Sensor	14 pcs
WS01W02M00	EP Sensor	1 pc
IR33COHBOM	IR33 controller	6 pcs
Supervisor	See price list for codes	1 pc

Parts required:

- 2 x 230/24 Vac transformers code TRADR4W012 for Access Point and Router-Bridge (230 Vac Router doesn't require a transformer);
- 1 x USB/RS485 converter if the PVPRO supervisor is used

Handheld for configuring
rTM SE system code
WS01L01M00



No electrical connections



Monitoring independent of the existing controller



Easy to install

Headquarters ITALY

CAREL INDUSTRIES Hqs.
Via dell'Industria, 11
35020 Brugine - Padova (Italy)
Tel. (+39) 0499 716611
Fax (+39) 0499 716600
carel@carel.com

Sales organization

CAREL Asia - www.carel.com
CAREL Australia - www.carel.com.au
CAREL China - www.carel-china.com
CAREL Deutschland - www.carel.de
CAREL France - www.carelfrence.fr
CAREL Iberica - www.carel.es

CAREL India - www.carel.in
CAREL Russia - www.carelrussia.com
CAREL South Africa - www.carelcontrols.co.za
CAREL Sud America - www.carel.com.br
CAREL U.K. - www.careluuk.co.uk
CAREL U.S.A. - www.carelususa.com

Affiliates

CAREL Czech & Slovakia - www.carel-cz.cz
CAREL Korea - www.carel.co.kr
CAREL Ireland - www.carel.com
CAREL Thailand - www.carel.co.th
CAREL Turkey - www.carel.com.tr

All trademarks hereby referenced are the property of their respective owners. CAREL INDUSTRIES is a registered trademark of CAREL INDUSTRIES in Italy and/or other countries.